

🔊 Vowel Sounds and Spellings: oi, oy



coin



boy

Listen and Learn

- 🔊 Listen to each group of words. Choose the two words in each group with the vowel sound you hear in the word *boy*.

- | | | | |
|----------|-------|-------|-------|
| 1. jay | joy | Joe | soy |
| 2. boil | bale | ball | broil |
| 3. soil | sail | toil | sell |
| 4. royal | spoil | spell | spill |
| 5. jail | join | just | joint |
| 6. too | toy | old | oil |

Talk Together

- 🔊 Listen and read. Find the words that have *oi* or *oy*.

Over to You

Lost!

"We're lost," said Roy. "Do we go right or left? I don't know which way to go."

"Let's use the map key," said Dad. "That is what a map is for. It shows where our camp is, and we can find out where we are right now. Then we will know which way to go."

"Do you mean that picture there?" Roy pointed to a picture of a tent on the map.

"Yes," his dad said. "That is a symbol for the camp. We need to turn around. We have to go that way."

"Wow, that map is not a toy. It is a useful tool," said Roy. "Now we can join the others and have lunch!"


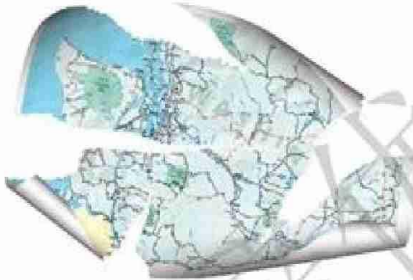
Work with a partner.

Find and read each word with *oi* or *oy*. Then work together to use the words to tell what you think Roy and his dad did next.

- ◀ Practice reading words with the spellings *oi* or *oy* by reading "Lost!" with a partner.



Suffixes

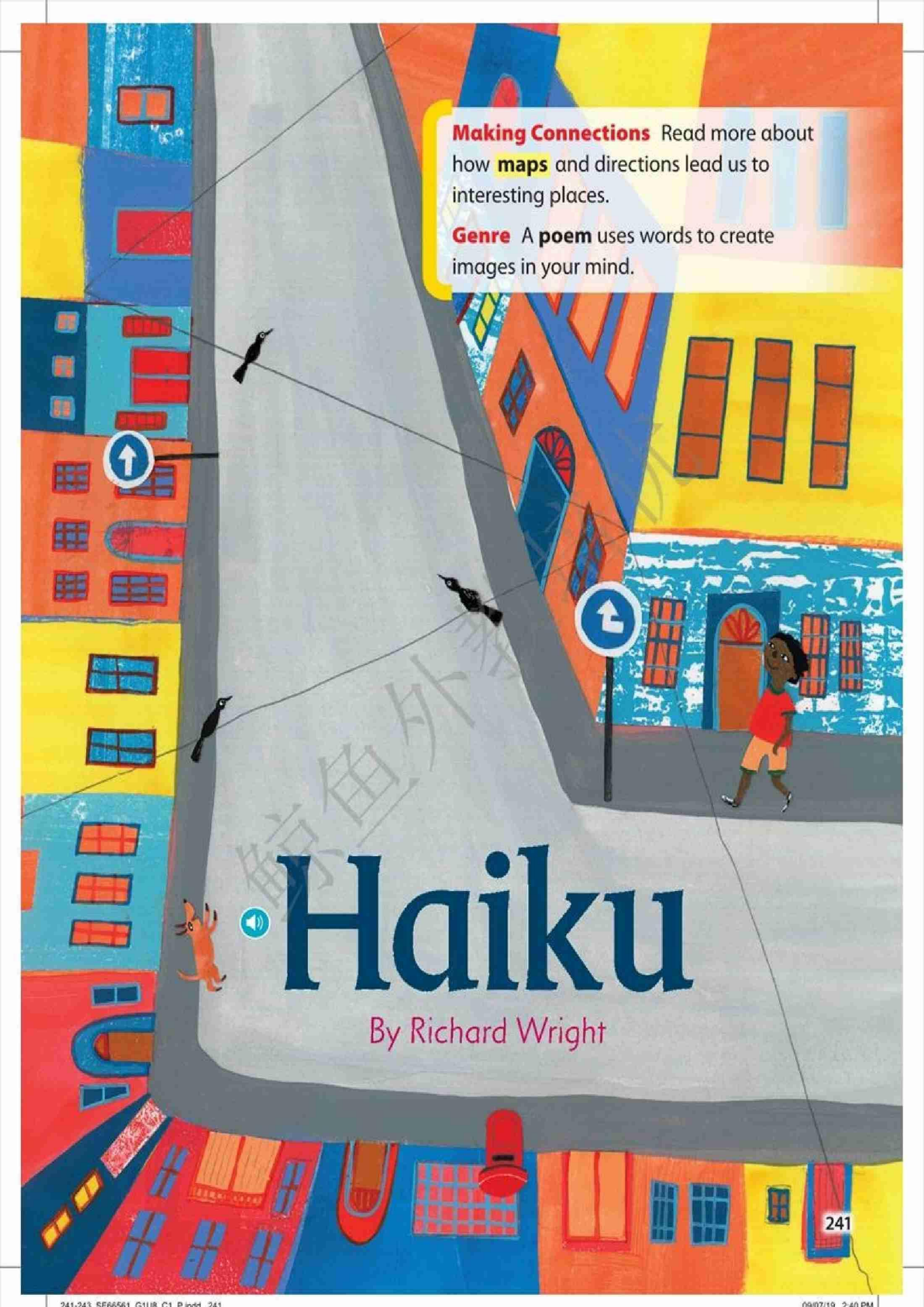
-ful	-less				
					
This map is useful . use + ful = useful	This map is useless . use + less = useless				
base word	suffix	new word	base word	suffix	new word

Sometimes you can add a **suffix**, like **-ful** or **-less**, to the end of a word to make a new word. What do **useful** and **useless** mean?

Try It Together

Add **-ful** and **-less** to each word. How do the meanings change?

Word	-ful	-less
care	careful	careless
help		
hope		

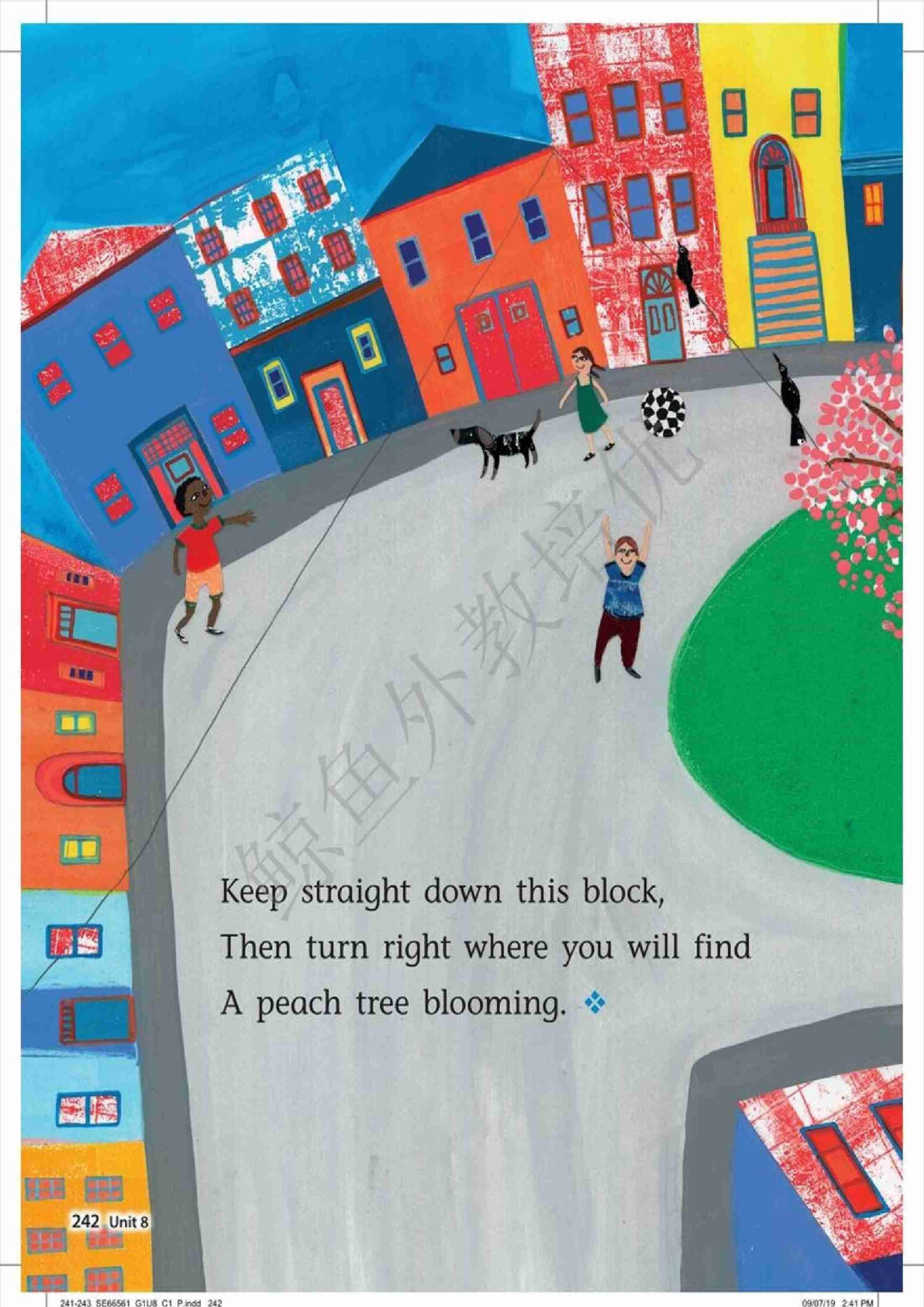


Making Connections Read more about how **maps** and directions lead us to interesting places.

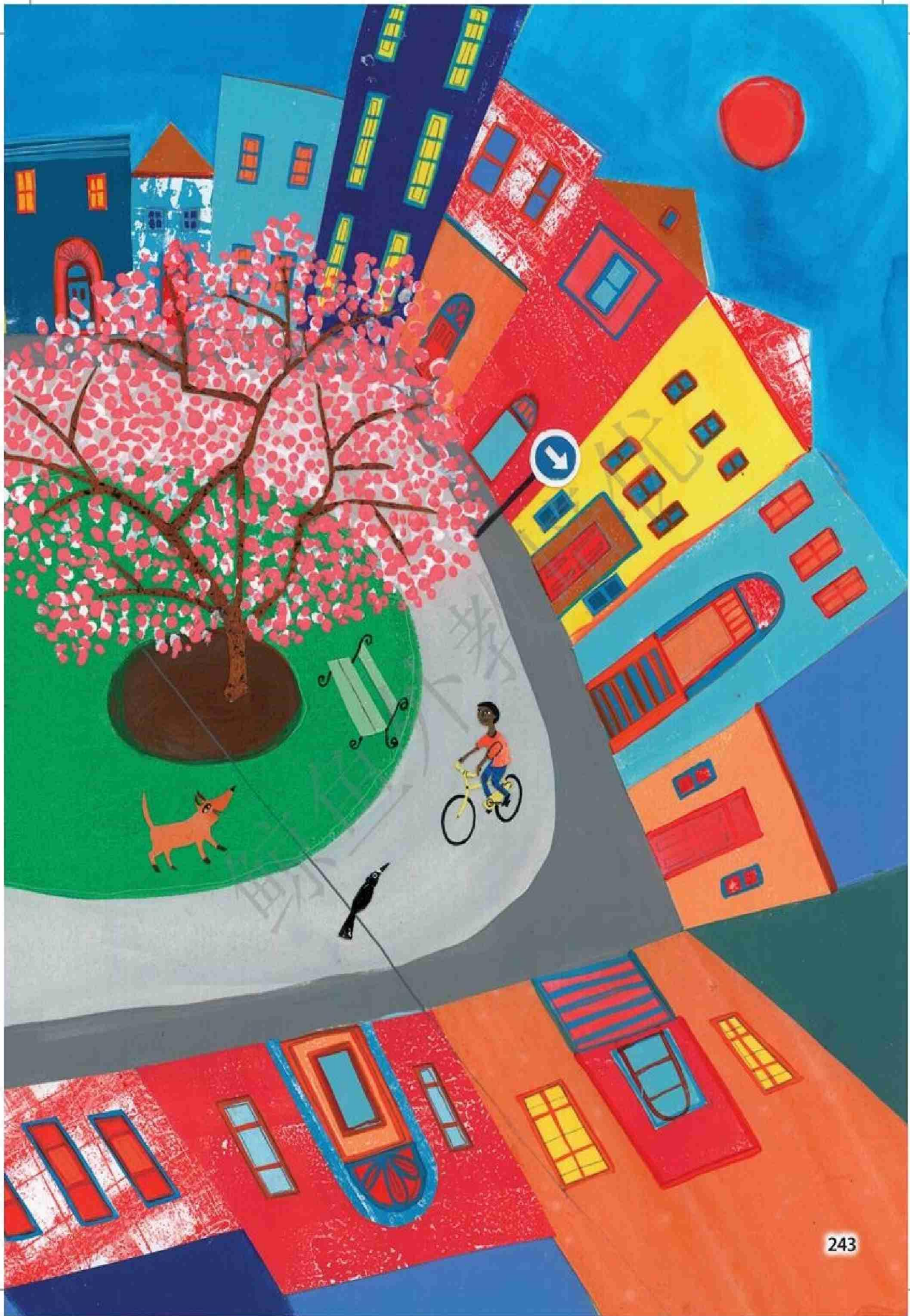
Genre A **poem** uses words to create images in your mind.

Haiiku

By Richard Wright



Keep straight down this block,
Then turn right where you will find
A peach tree blooming. ❖



Compare Genres


How are the words in “If Maps Could Talk” and “Haiku” different?

Informational Text

The Key to Using Maps

The box at the bottom of a **map** is the **key**. Use the map key to learn the **meanings** of map **symbols**.

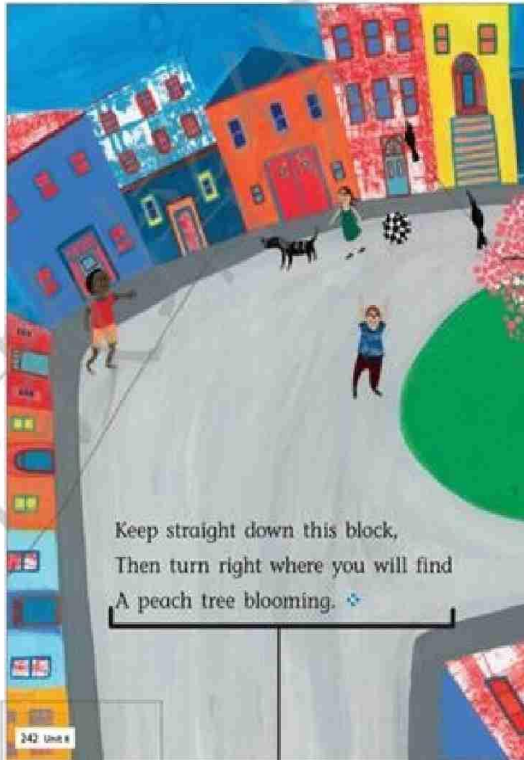
Mapmakers use shapes to stand for real things. On the Street Map, what do the squares stand for?



229 Unit 8

The text gives definitions.

Poem



Keep straight down this block,
Then turn right where you will find
A peach tree blooming. ❖

242 Unit 8

The words create images in your mind.

Talk Together

Think about what you read and learned. Why do we need **maps**?

Adverbs

An **adverb** can tell more about a **verb**.

We **stand quietly** by the peach tree.



Grammar Rules Adverbs

Adverbs can tell:	Examples
<ul style="list-style-type: none"> how something happens. These adverbs often end in -ly. 	They walk slowly .
<ul style="list-style-type: none"> where something happens. 	The peach tree is north of the bench.
<ul style="list-style-type: none"> when something happens. 	We always visit the peach tree.

Read a Sentence

Which word is an adverb? How do you know?

The flower petals fall softly from the tree.

Write a Sentence

Write a sentence to tell how you got ready for school today. Use an adverb.